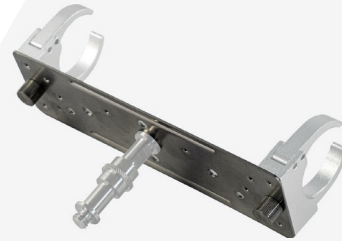


A mounting holder for 2 AX1 holders (AX1-H) with backside 1/4"-20 thread for AX1 double-ended spigot (AX1-BLT). Can be used to hang or mount tubes and create shapes such as triangles and squares out of multiple tubes.

**NOTE:**

The WingPlate needs 2 x holders (AX1-H) that are supplied separately

### Wingplate with Holders & BabyPin

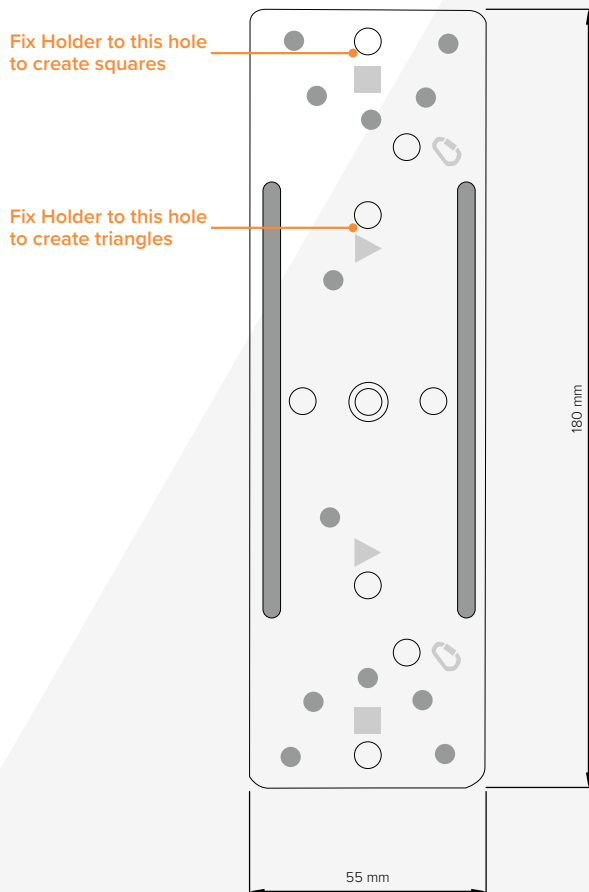


## SPECIFICATIONS

Order Code	AX1-WP
Center thread	1/4" – 20UNC
Screws for TubeHolders	2
Weight	0.13 kg / 0.29 lbs
Dimensions (L x W x D)	180 mm x 55 mm x 19 mm / 7.1" x 2.2" x 0.7"

All specifications provided are typical values and maybe subject to change without prior notice.

## DRAWING



## USE CASES

