



Essential grip for mounting Astera tubes to walls, truss and other structures.

Holder on Tube

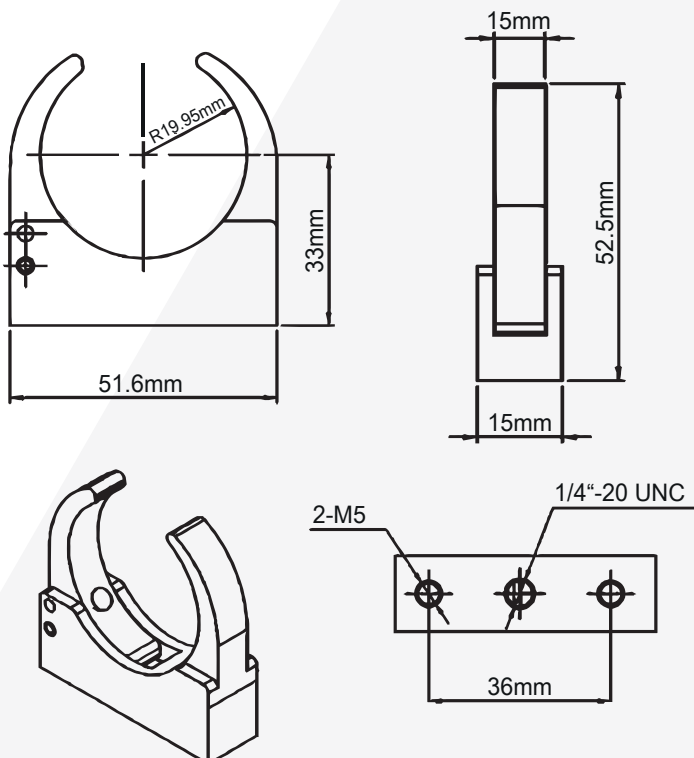


## SPECIFICATIONS

Weight	AX1-H
Order Code Holder Rubber	AX1-H-R
Order Code (Safety „R“ Clip)	AX1-H-PIN
Thread	1x 1/4" with sinkhole , 2x M5
Weight	0.045 kg / 0.09 lbs
Dimensions (L x W x D)	51.6 mm x 52.5 mm x 15 mm / 2.03" x 2.06" x 0.6"

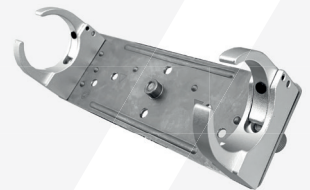
All specifications provided are typical values and maybe subject to change without prior notice.

## DRAWINGS



## USE CASES

Holder on WingPlate



Tube mounted on truss with Holder and SuperClamp



Holder for hanging / safety

