



Say hello to our next-generation multi-purpose light. In addition to being a battery-powered uplight and PAR with 5 different beam options, multiple PixelBricks can be connected to form clusters and shapes. With about 10 cm edge length and 1kg weight, it is small and lightweight while still featuring a powerful output of high-quality light. The PixelBrick can be used for many stage, film and TV applications.



App



Wireless DMX



Max 20h



IP65

SPECIFICATIONS

Order Code	PB15
LED Engine	Titan LED Engine
Colors	RGBMintAmber
LED Power Draw	12 W
Luminous Flux 2700 K	405 Lumens
Luminous Flux 3200 K	475 Lumens
Luminous Flux 5500 K	395 Lumens
Light Output 2700 K @ 1 m	6 178 Lux
Light Output 3200 K @ 1 m	7 144 Lux
Light Output 5500 K @ 1 m	5 985 Lux
CRI (Ra)/ TLCI 3200- 6500 K*	≥96
Beam Angle	13°
Field Angle	25°
Strobe	0 - 25 Hertz
Battery Runtime	up to 20 hours
Battery Lifetime	70 % after 300 cycles
DC Input	24 VDC - 0.8 A
DC Connector	5.5 mm x 2.1 mm
Power Consumption (max.)	20 W
Wired DMX	Yes (via FP1-PWB / FP3-DTL / PWB-2-86 / PWB-1-100)
CRMX Receiver	Built-in
BluetoothBridge BTB	Built-in
Wireless Protocols	CRMX, UHF, Bluetooth, WiFi
Wireless Range	CRMX/UHF up to 300 m / 330 yds Bluetooth up to 3 m / 3.3 yds
Infrared Control	Yes
IP Rating unwired	IP65 (only with PB15-PLG)
IP Rating wired with PWB-CAB-0.2/-1.5/-5/-10/-15	IP65
Ambient Operating Temperature	0 - 40 °C / 32 - 104 °F
Weight	1.12 kg / 2.47 lbs
Dimensions L x W x D	91 mm x 91 mm x 94 mm / 3.6" x 3.6" x 3.7"
Mounting Options	4x Airline Tracks, 4x M5 threads, BrickBracket

All specifications provided are typical values and maybe subject to change without prior notice.

RF CHARACTERISTICS

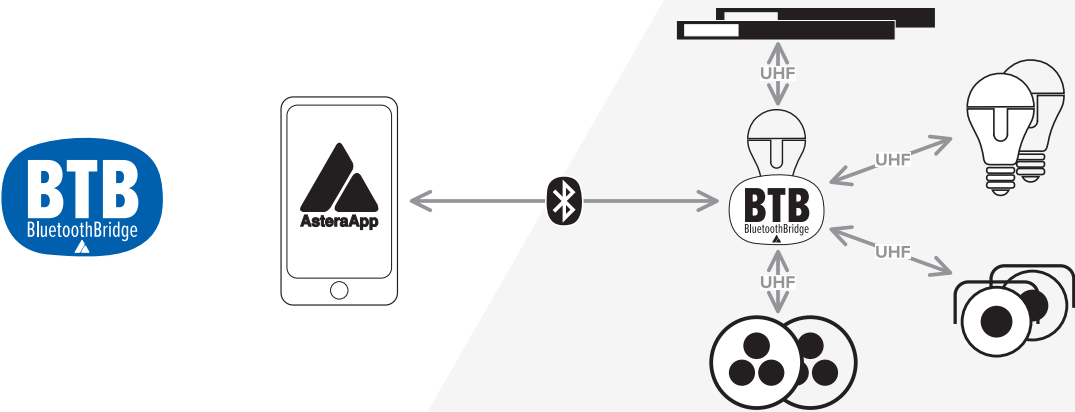
Wireless Modules	EU: UHF*** (863-870MHz)	USA: UHF (917-922.20MHz)	AUS: UHF (922.30-927.50MHz)	SGP: UHF (920.50-924.50MHz)	KOR: UHF (917.9-921.5MHz)
Modulation	FHSS	FHSS	FHSS	FHSS	FHSS
ERP (Transmitter)	<25mW	<25mW	<25mW	<25mW	<25mW
Channel Count	47	53	53	41	10

Wireless Modules	RUS: UHF (868.75-869.12MHz)	JPN: UHF (922.80-926.40MHz)	CRMX (2402-2480MHz)	Bluetooth 5.0 LE (2402-2480MHz)	WiFi (2412-2472MHz)
Modulation	FHSS	FHSS	FHSS	FHSS	DSSS, OFDM
ERP (Transmitter)	<25mW	<25mW	-	10mW (BLE)	<100mW
Channel Count	6	19	79	40	13

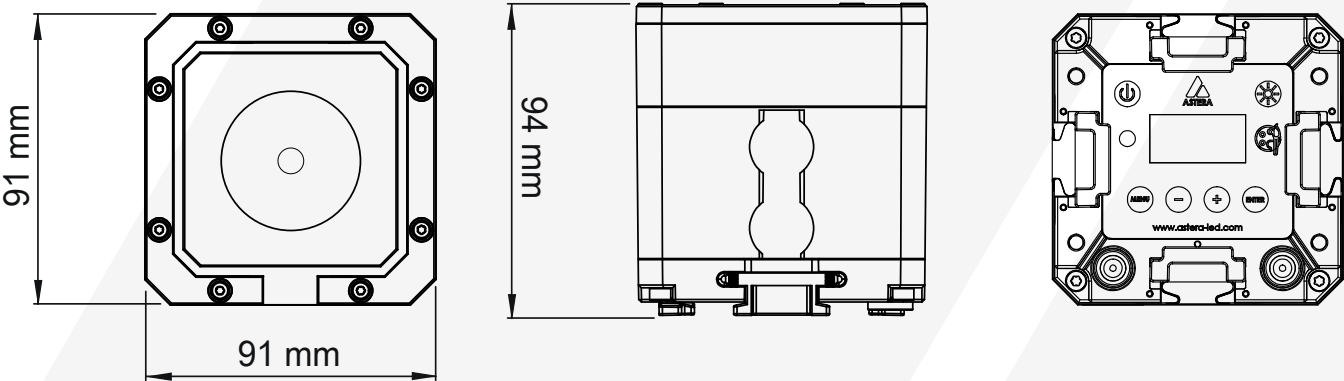
***General allocation of frequencies for use by short-range radio applications

PIXELBRICK AS BLUETOOTHBRIDGE

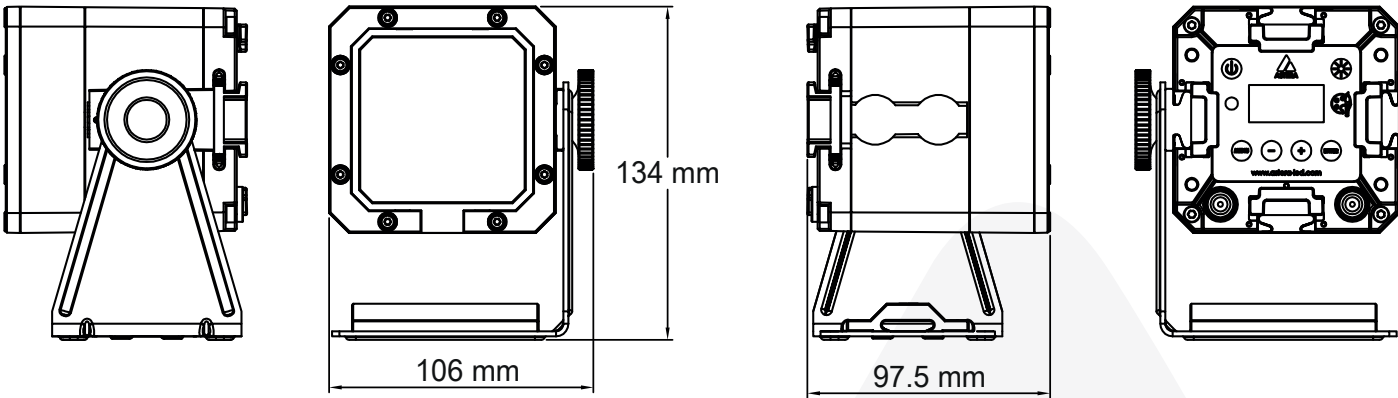
Connect directly to selected Astera lights via Bluetooth. This master light will revert AsteraApp commands to itself and other Astera lights via UHF band. Works as well with the AsteraBox.



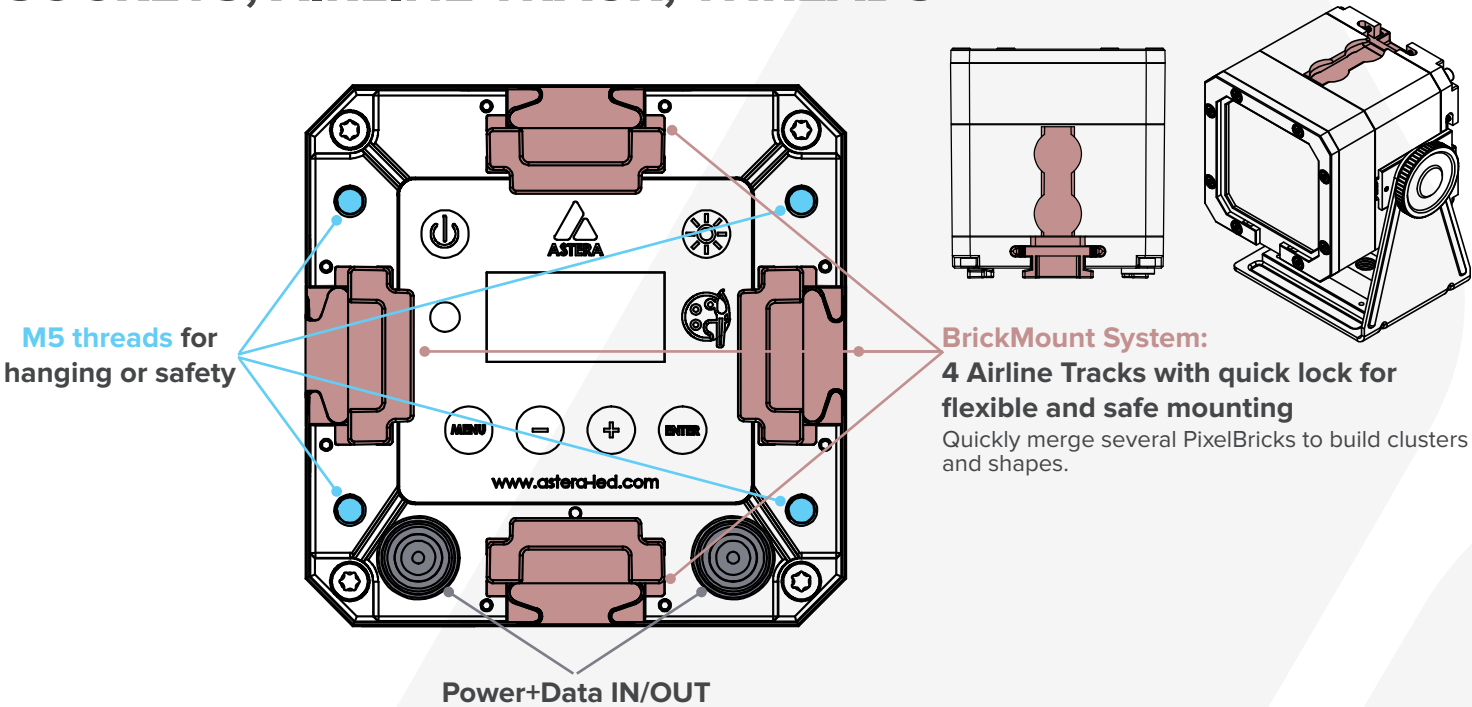
DRAWINGS without bracket



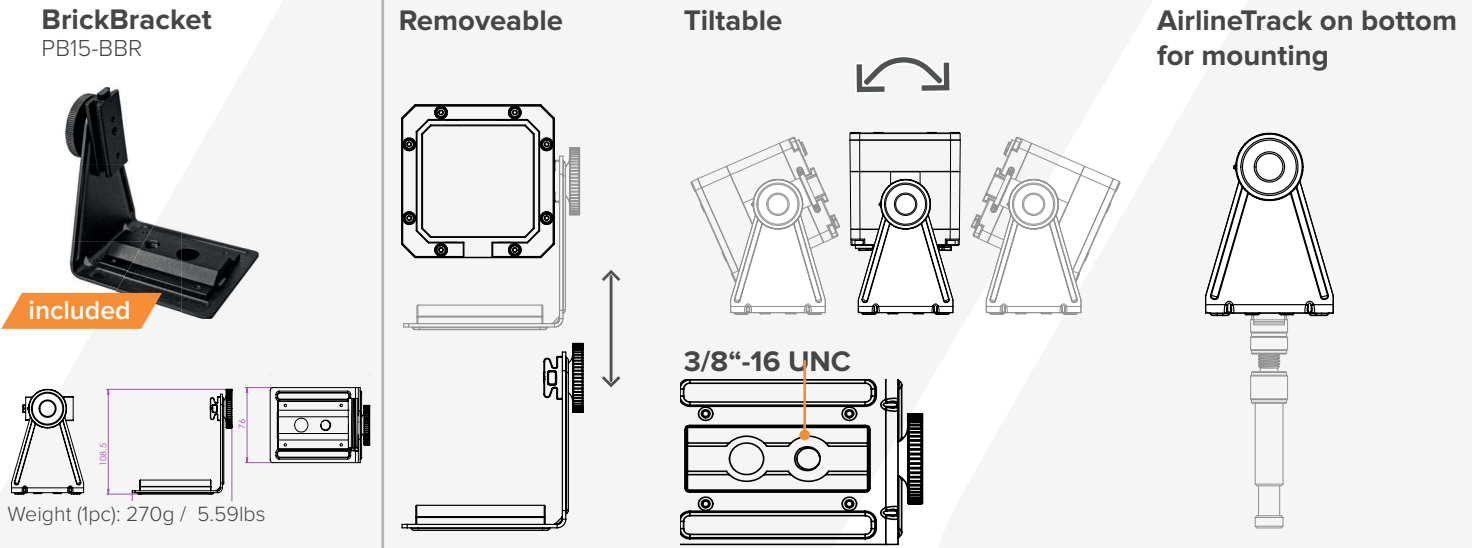
with bracket



SOCKETS, AIRLINE TRACK, THREADS

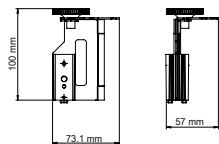


ACCESSORIES



BrickHinge

PB15-BHI



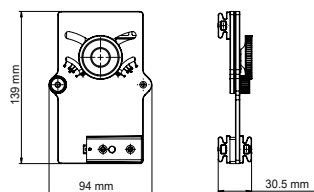
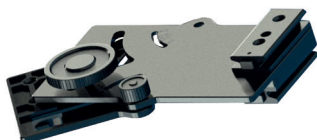
Weight: 220g / 0.48lbs

BrickHinge on PixelBrick to create several shapes



BrickTilt

PB15-BTLT



Weight: 270g / 0.59lbs

BrickTilt on PixelBrick

Tilt the angle of the PixelBrick outward or inward

Build creative shapes

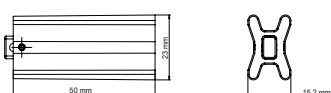


BrickConnect

PB15-BCN

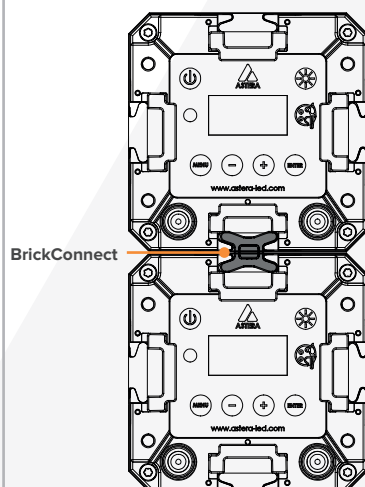


included



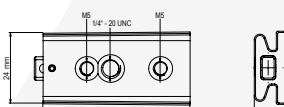
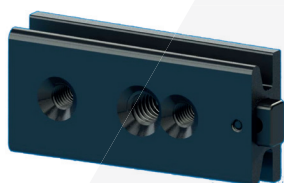
Weight (1pc): 27g / 0.059lbs

Connect your PixelBricks to several shapes



BrickMount

PB15-BMO

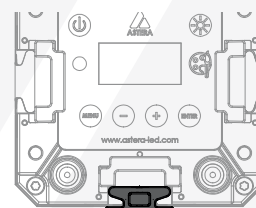


Weight (1pc): 25g / 0.55 lbs

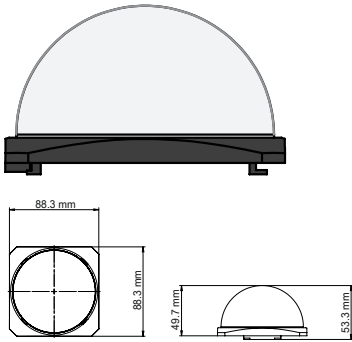
BrickMount on PixelBrick



Mounted on plate



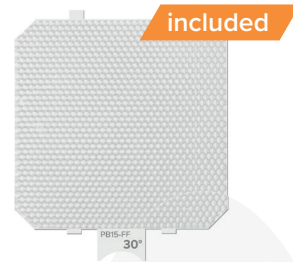
BrickDome PB15-BDM



BrickDome on PixelBrick



Filters



FloodFilter 30°
PB15-FF



BeamSoftener 17°
PB15-BSO

TrackPin AX-TP



EyeBolt FP1-EBLT



PowerBox PWB-2-86 2x86 W



PowerBox PWB-1-100 1x100 W



Power/Data Cable 5m, 10m, 15m PWB-CAB-5/-10/-15



Power/Data Cable 0,2m PWB-CAB-0.2



ChargingCase PB15-CHRCSE



Weight (empty) 6.8 kg / 15 lbs
Weight (full): 16.3 kg / 36 lbs



Dimensions:
541.5 mm x 400 mm x 205.5 mm /
21.3" x 17.44" x 8.1"

AccessoryCase PB15-ACCCSE



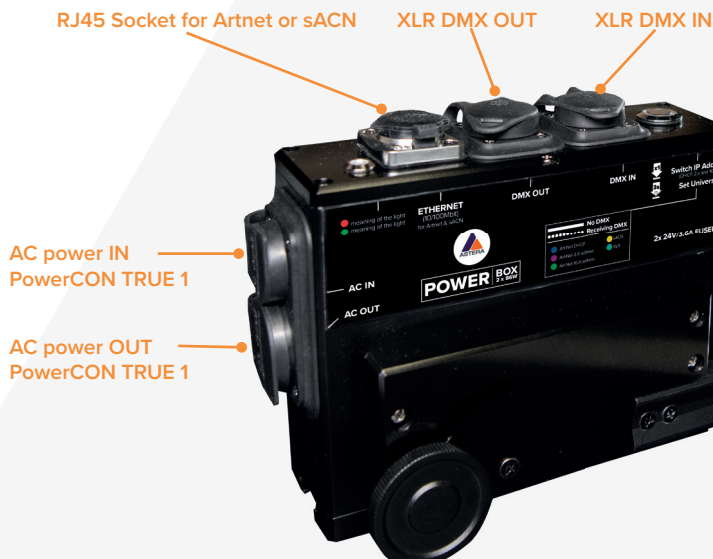
Weight (empty): 7kg / 15.4lbs
Weight (full): 13.3kg / 29.3lbs



Dimensions:
541.5 mm x 400 mm x 205.5 mm /
21.3" x 17.44" x 8.1"

CHARGING & CONNECTING

With PowerBox 2x86 (PWB-2-86)



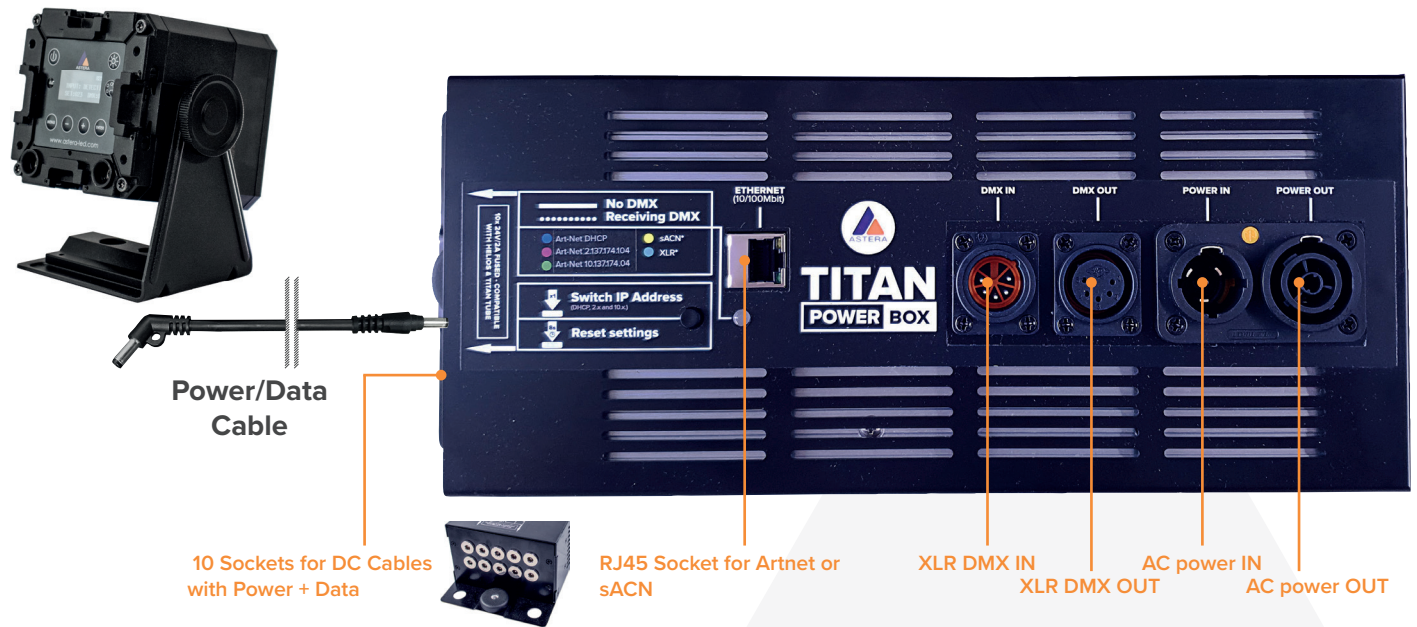
2 Sockets for DC Cables
with Power + Data



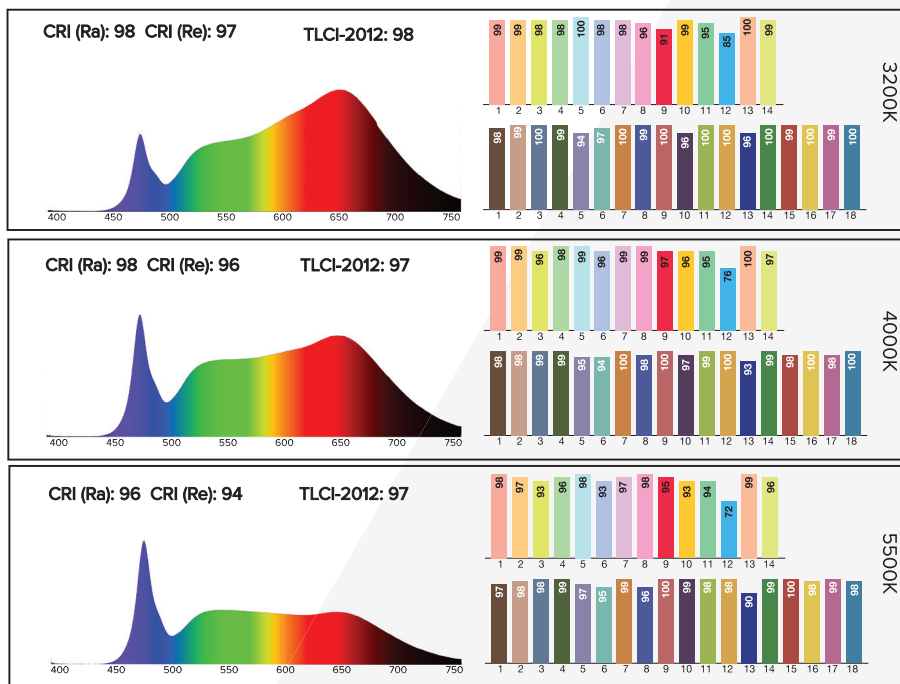
Power/Data Cable



With Titan PowerBox (FP1-PWB)



TYPICAL SPECTRAS



Typical values